

Installing NetSupport School for use with NComputing X-series and L-series virtual desktops

NetSupport School is a class leading training software solution, providing Teachers with the ability to instruct, monitor and interact with their Students either individually, as a pre-defined group or to the overall class.

With a wealth of unique and innovative features, NetSupport School is consistently voted ‘Top Of The Class’ by industry experts. Combining advanced classroom PC monitoring, real-time Presentation and Annotation tools, with an innovative customized Testing suite, Internet and Application control, automated Lesson Plans, Printer Management, Instant Messenger control, Content Monitoring and Desktop Security, NetSupport School rises to the challenge and requirements of today's modern classroom.

This document is for use with NetSupport School 10.5 and 11 in X-series and L-series environments.

Planning an Installation

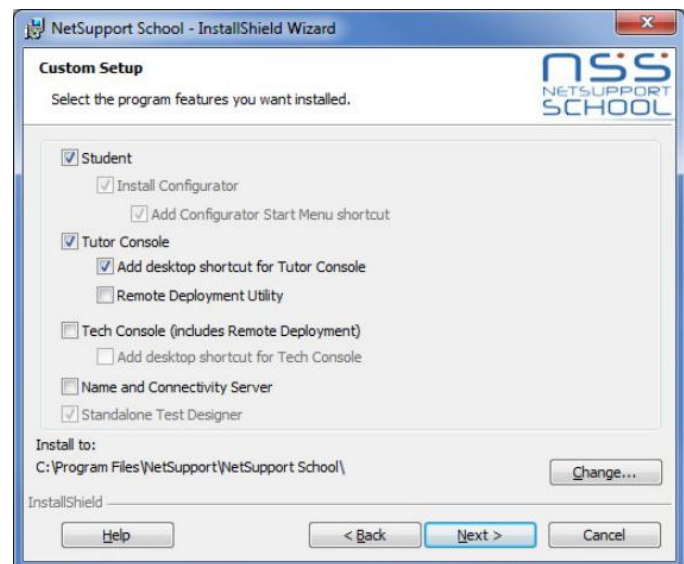
For a Teacher to be able to connect and communicate with each NComputing virtual desktop the NetSupport School Student component must be installed on the computer running the NComputing vSpace software. On the computer that will be used by the Teacher you will additionally need to install the NetSupport Tutor component.

Installing NetSupport School

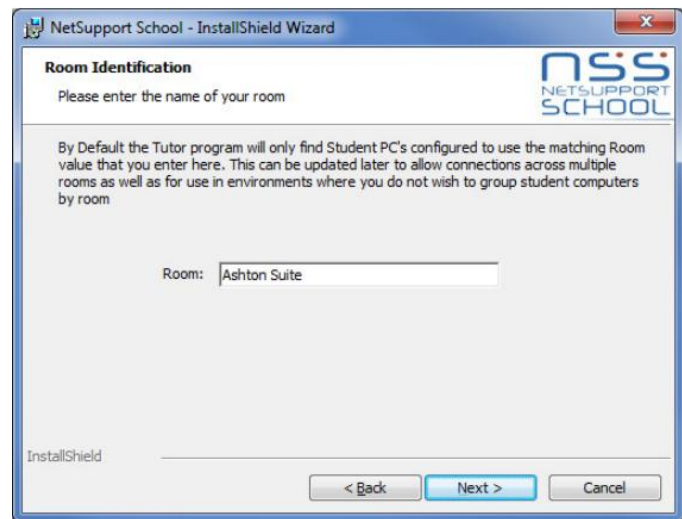
On each NComputing computer that is running the vSpace desktop virtualization software run the NetSupport School installation program and follow the on-screen instructions. At the ‘Setup Type’ dialog select Custom.

1. On the ‘Custom Setup’ dialog choose the Student option.

2. If this computer is going to be used by the Teacher you should also select the Tutor Console option.



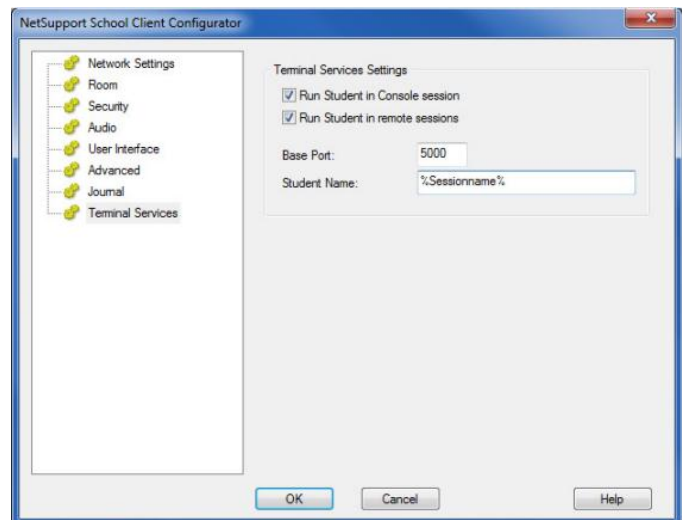
3. On the Room Identification dialog enter the name of the Room that the NComputing solution is located in, this information will be used to ensure that the Teacher and Students are connected to each other using NetSupport School.



4. At the end of the installation, run the NetSupport Student Configurator from {Start}{Programs}{NetSupport School}.

5. Navigate to the Terminal Services section and enter %Sessionname% in the Student Name field.

Note that %Username% can be used as well in this step. This value can help ensure unique identities in environments that make use of many vSpace hosts.



Congratulations, you have completed a basic installation of NetSupport School in an NComputing x-series environment, for more options please refer to the NetSupport School Manual.